

# dji 無人機遙控器改裝步驟說明

## Wifi range extender installation for DJI Phantom 4, 3 Pro & Advanced

<p>1</p> 	<p>首先將遙控器放置在較軟的桌面或墊子上。</p> <p>Put controller on the soft mat.</p>	<p>2</p> 	<p>將背面上 4 個塑膠拔除。可以看到 4 個孔固定上下蓋螺絲。</p> <p>Remove 4 rubber plugs; There are 4 screws.</p>
<p>3</p> 	<p>使用附贈的起子。將 4 個螺絲卸下。</p> <p>Use Phillips screwdriver to remove 4 screws.</p>	<p>4</p> 	<p>固定螺絲卸下後。接下來要卸下 USB 的背蓋六角螺絲</p> <p>After screws were removed, the next step is to remove hex head screws of USB cover.</p>
<p>5</p> 	<p>使用附贈的內六角扳手將 4 個螺絲卸下</p> <p>Use hex key to remove 4 screws.</p>	<p>6</p> 	<p>螺絲卸除後將蓋子拿起</p> <p>Remove the cover.</p>

7.



可以看到電路板及連接的軟排線

There are circuit board and flat cable connected.

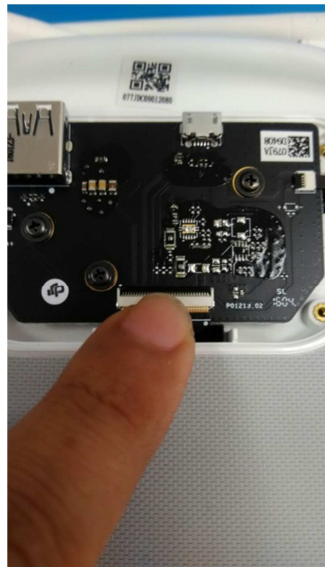
8



必須將中間這條軟排線拆下才可以拆開上下蓋

Should take apart the flat cable before separate the controller shell.

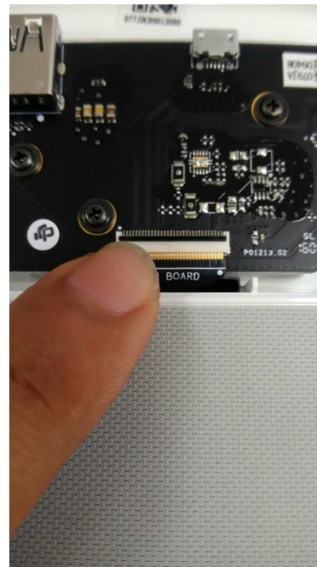
9.



可以看到排線上有一支黑色夾片

There is a black clip on the flat cable.

10.



將夾片往後扳起後才可以退出軟排線

Flip black clip up, and remove the flat cable.

11.



使用附贈的內六角用左右後推的方式慢慢的將排線退出

Use hex key to remove the flat cable from black clip slowly and carefully.

12.



排線退出後的樣子接下來可以開始分開上下蓋

After the flat cable was removed from black clip, you can separate the controller shell.

13.



握住其背面的把手慢慢的施力將背蓋分開.請盡量避免過過度施力以免內部角柱斷裂

Hold the handle to separate controller shell carefully; do not pull hard to avoid the inner plastic broken.

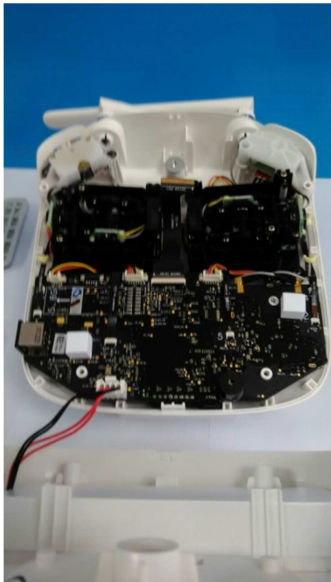
14.



背蓋打開後請先慢慢的分開.底部有電源線與前蓋相連

Open slowly; there is a power line connected with controller bottom shell.

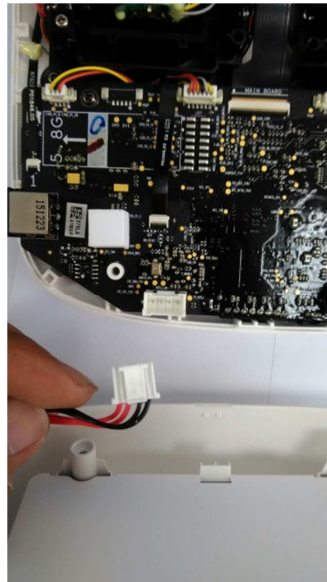
15.



上下蓋分開後可以看到連接的電源線

After controller shells were separated, you can see the power line was connected.

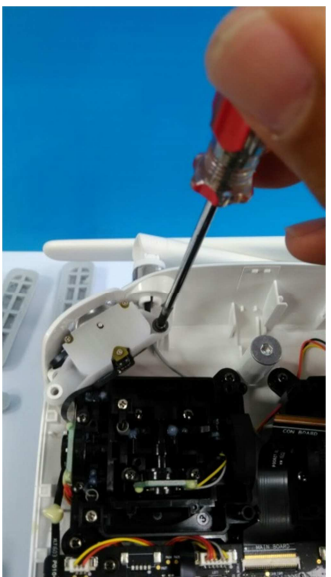
16.



將與上蓋連接的電源線插頭拔開後就可以將背蓋放置一旁

Unplug the power line.

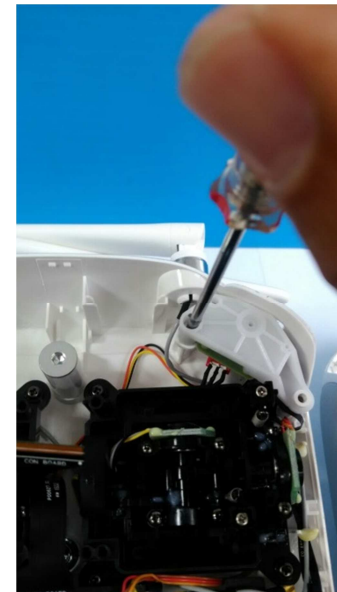
17.



將遙控器左上角的控制鈕的螺絲卸下

Remove the screw from upper left corner

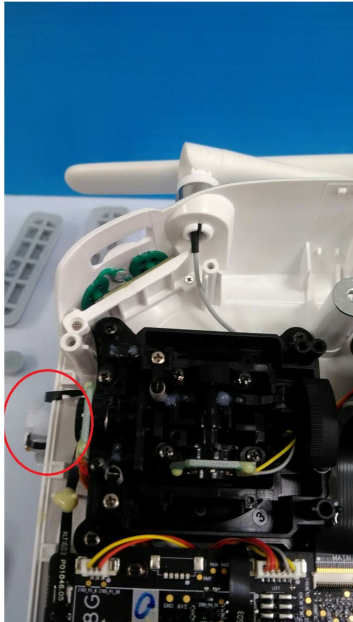
18.



將遙控器右上角的控制鈕的螺絲卸下

Remove the screw from upper right corner.

19.



將控制鈕拿起來後  
因為有軟排線連接  
著.所以拿起後放在  
旁邊垂掛著

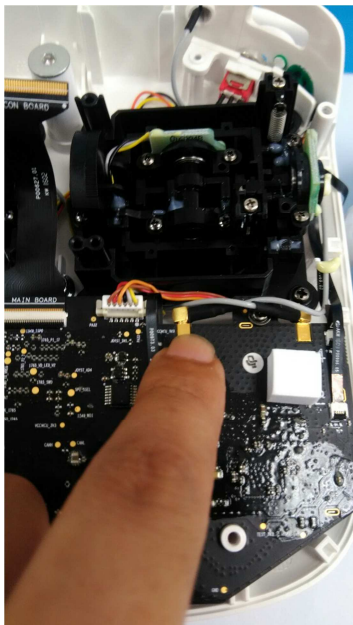
Because there is a  
flat cable  
connected, take out  
the control button  
and hang it on.

20.



Same as step 19.

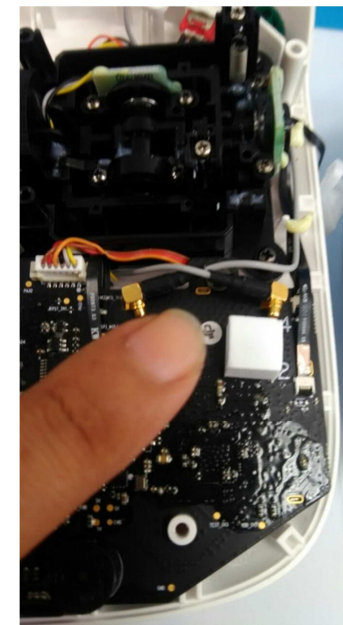
21.



遙控器右邊可以看  
到天線的接頭

There are two  
connectors of  
antenna cable on  
the right side of the  
controller.

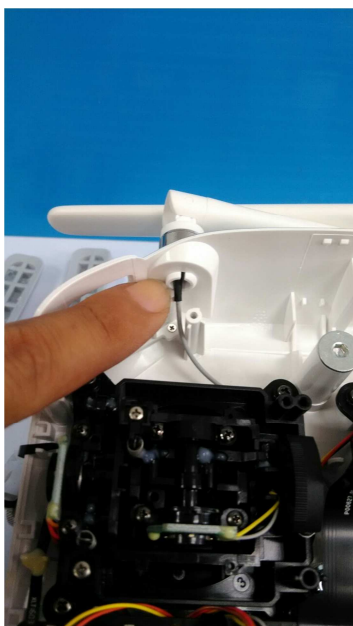
22.



使用附贈的一字起  
子將接頭往前推使  
接頭脫離

Use flat blade  
screwdriver to  
unplug the  
connector.

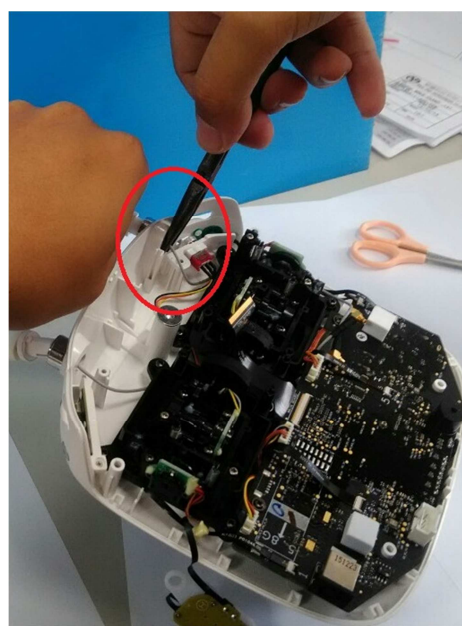
23.



使用尖嘴鉗夾住天  
線後端

Use needle-nose  
pliers to clamp the  
end of antenna.

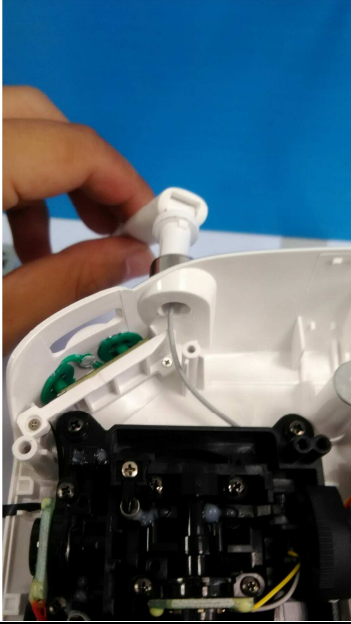
24.



將天線慢慢往前拉  
使卡榫脫離機構此  
步驟較為困難請小  
心操作

Pull out the antenna  
slowly to make the  
joint separate from  
mechanism; this  
step is difficult,  
please be careful.

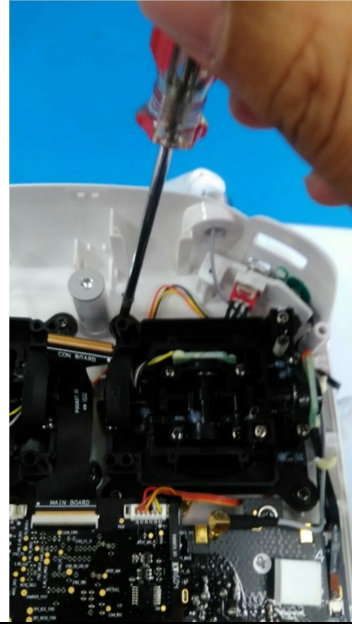
25.



天線卡榫稍微拉出後由於線材還繞在機構內。所以無法完全將天線拉出

Pull out the antenna joint a little bit; because the cable is still on the mechanism, so can't pull out the antenna totally.

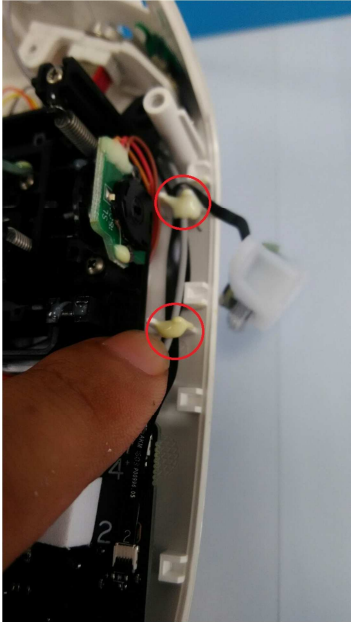
26.



將右邊搖桿的 4 支螺絲轉開

Unscrew 4 screws of right side.

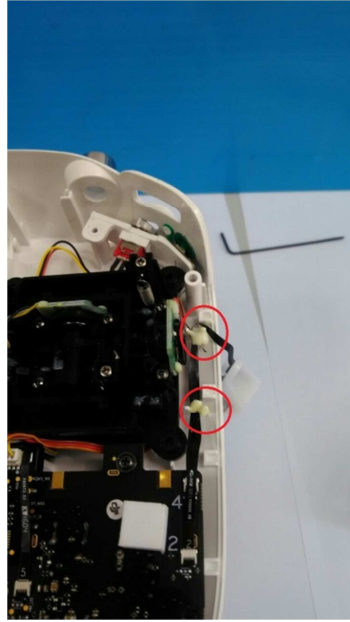
27.



右邊天線的線原廠會上膠與排線做固定

Right side antenna cable was fixed by glue.

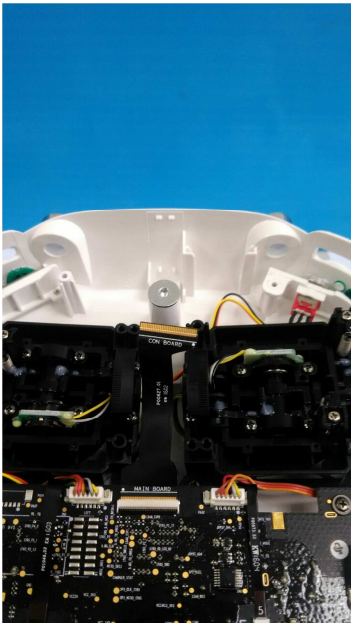
28.



可以使用小剪刀將膠小心剪開務必注意不要剪到排線

Use scissors or knife to cut the glue; be careful, do not cut the cable.

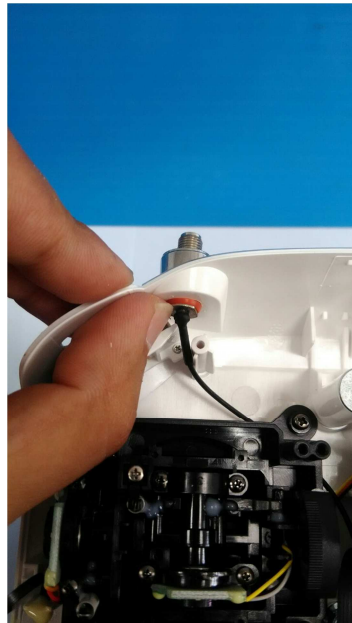
29.



將原廠天線慢慢的拉出即可

Pull out the antenna.

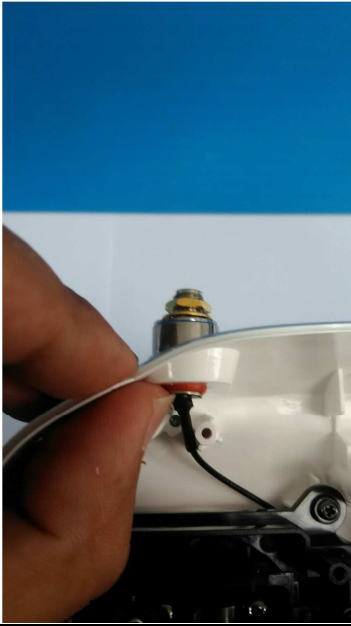
30.



拿出改裝用的線材穿過原本天線洞口

Pass the cable assembly through the hole.

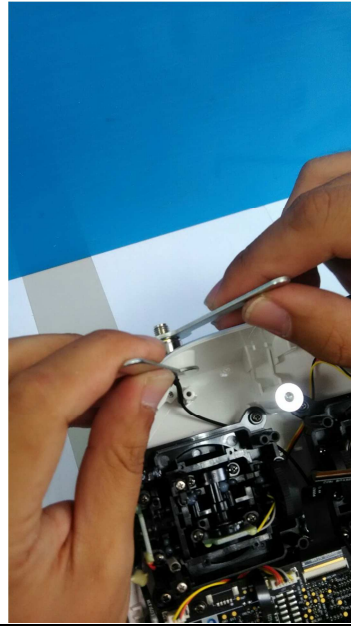
31.



將華司跟螺帽稍微鎖上

Screw washer and nut slightly.

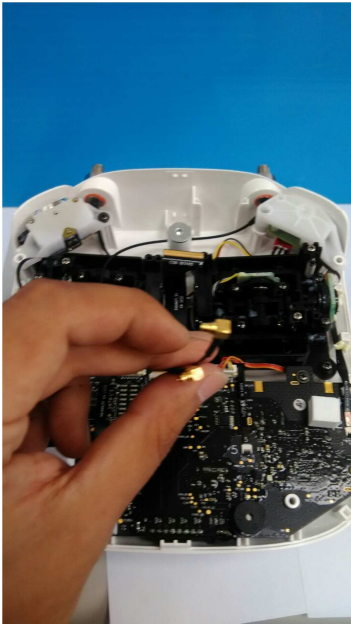
32.



使用附贈的開口板手將螺帽鎖緊

Use open-end wrench to tighten the nut.

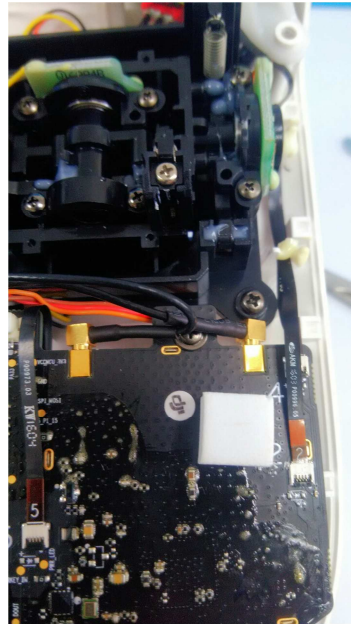
33.



線材在依機構的方向去繞.以不影響搖桿操作為主就可以

Put cable along the mechanism, if cable will not influence the operation of joystick, it will be okay.

34.



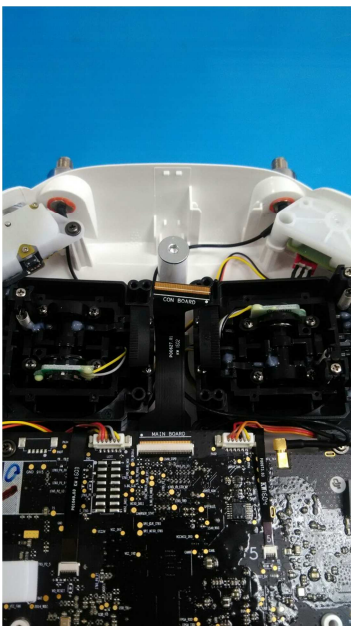
線材排好後將插頭插入即可

左邊天線插右孔  
右邊天線插左孔

Connection:  
Left antenna cable plugs right hole.

Right antenna cable plugs left hole.

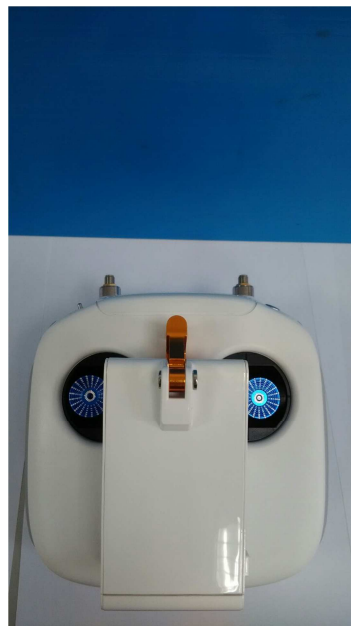
35.



這樣改裝接頭部分就完成

Connector replacement is complete.

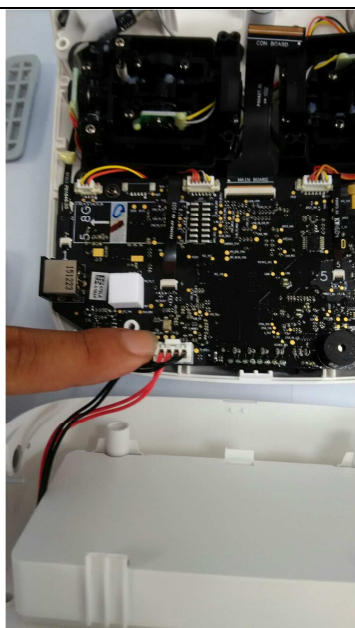
36.



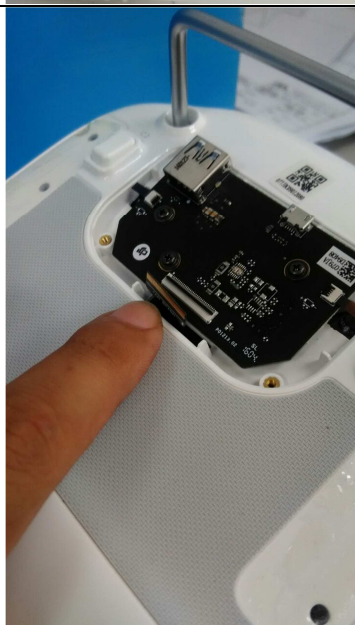
在按照剛拆解的方式反組裝回去即可

Assemble the controller shell.

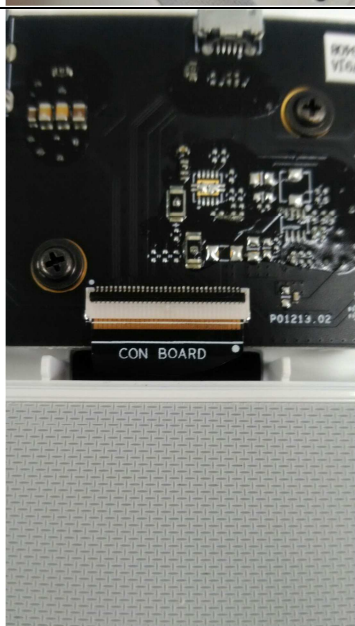
## 注意部分 NOTICE



背蓋組裝回去時,背蓋的電源線要先接上前蓋的插槽  
Connect the power line before assembling the controller shell.



背蓋蓋上時,排線要穿過背蓋的洞,使排線露出  
Flat cable should pass through the hole when assembling the controller shell.



排線插入插槽時,請小心並慢慢推入,並插至定位才可  
When insert flat cable to the socket, please insert to the position and be careful.