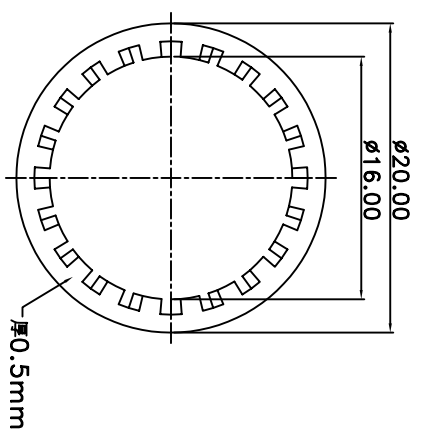
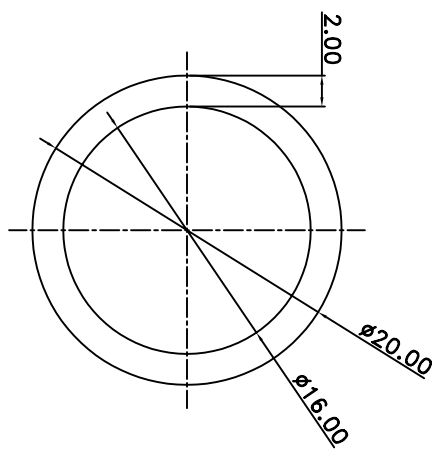
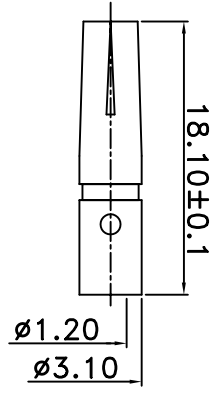
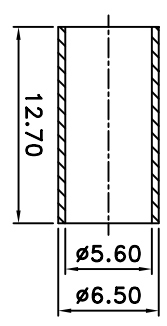
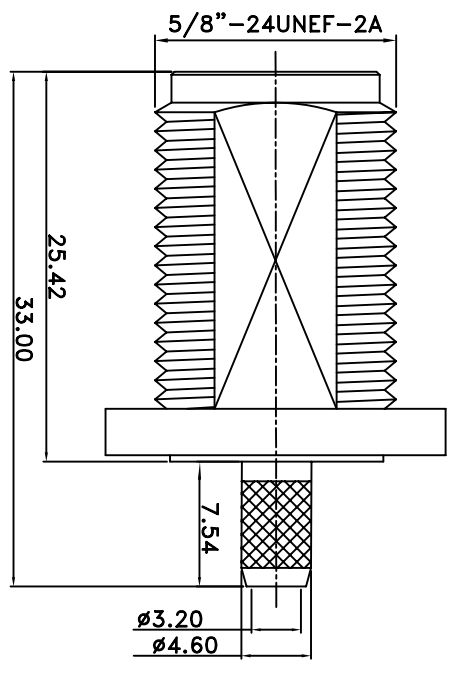
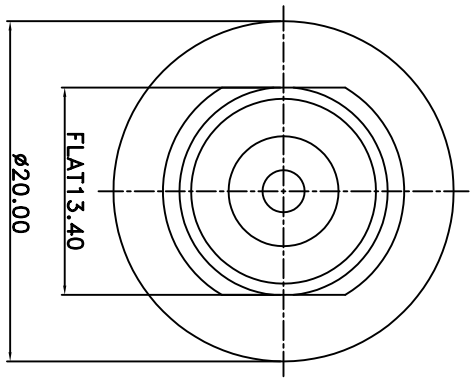
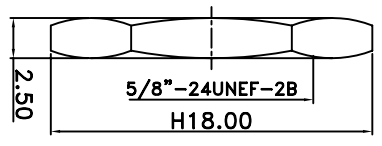


REV	DESCRIPTION	DRAWN	DATE

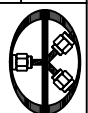


NO	Description	Qty	Material	Finish
10	CAP	1	BRASS	NICKEL
9	WASHER	1	BRASS	NICKEL
8	FERRULE	1	BRASS	NICKEL
7	GASKET	1	SI-RUBBER	RED
6	SLEEVE	1	BRASS	NICKEL
5	DIELECTRIC	1	TEFLON	NONE
4	DIELECTRIC	1	TEFLON	NONE
3	PIN	1	BRASS	GOLD
2	PIN	1	BRASS	GOLD
1	BODY	1	BRASS	NICKEL

UNLESS OTHERWISE SPECIFIED  
 1.REMOVE ALL BURRS  
 2.BREAK ALL CORNERS & EDGES CO.15 MAX.  
 3.CHAMFER 15° & LAST THREADS 45°.  
 4.DIAMETERS ON COMMON CENTERS.  
 TO BE CONCENTRIC WITHIN DIMENSIONS ARE AFTER PLATING.

\* MAJOR DIMENSION UNLESS OTHERWISE NOTED. TOLERANCES  
 0.5-6=±0.2  
 6-30=±0.4  
 30-120=±0.6  
 120-315=±1.0  
 ANGLES=±1°

APPROVED	CHECKED	DRAWN	SCALE	UNIT	MM
		Betty	2/1		


**華耀科技有限公司**  
 Hua Yao Technologies co., Ltd  
 TITLE: N FEMALE BULKHEAD CRIMP TYPE  
 DRAWING NO.: N-1112-24-F-TGN  
 REV: A  
 FILE NO.: D:\DWG\N FEMALE BULKHEAD CRIMP TYPE\N-1112-24-F-TGN