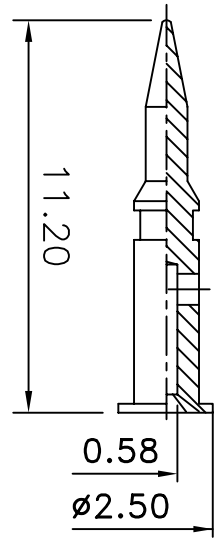
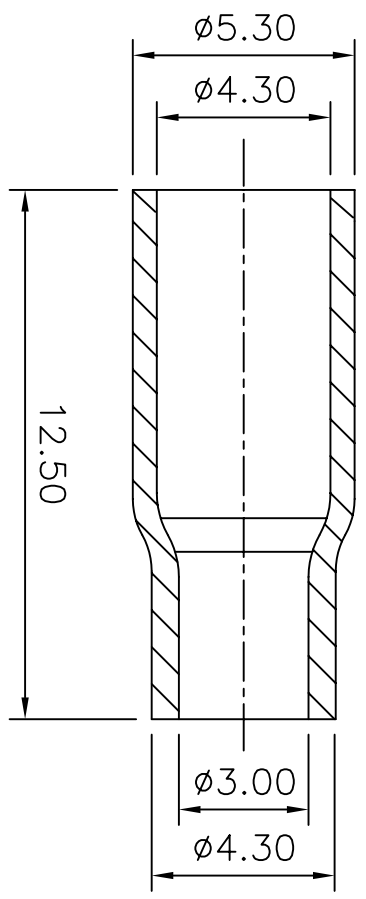
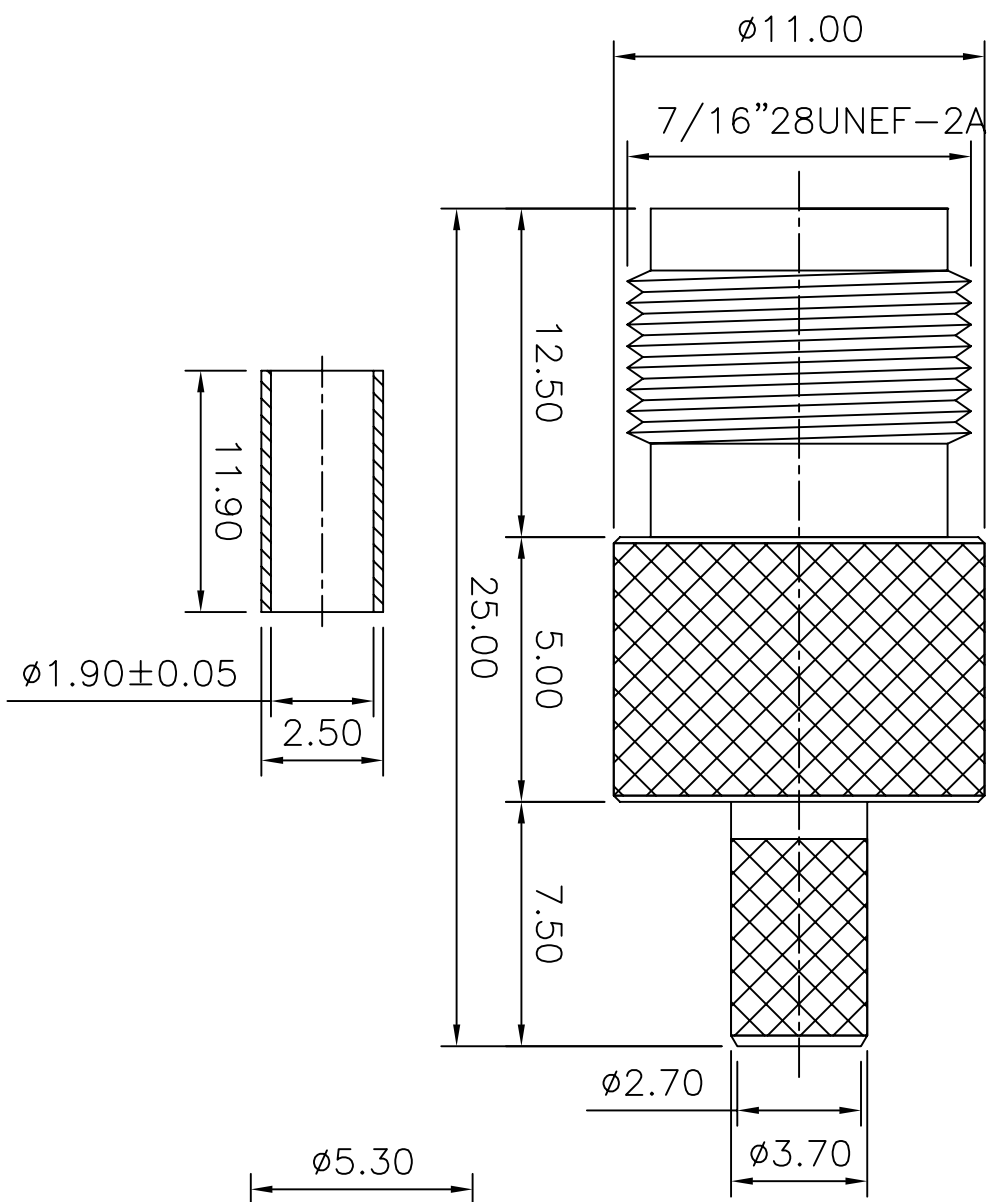


REV	DESCRIPTION	DRAWN	DATE

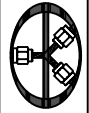


NO	Description	Qty	Material	Finish
5	Ferrule(F-010)	1	Brass	Nickel
4	Press fit washer(W-005)	1	Brass	Nickel
3	Dielectric	1	Teflon	None
2	Pin(C-02040)	1	Brass	Gold
1	Body(B-07039)	1	Brass	Nickel

UNLESS OTHERWISE SPECIFIED  
 1.REMOVE ALL BURRS  
 2.BREAK ALL CORNERS & EDGES CO.15 MAX.  
 3.CHAMFER 15° & LAST THREADS 45°.  
 4.DIAMETERS ON COMMON CENTERS.  
 TO BE CONCENTRIC WITHIN DIMENSIONS ARE AFTER PLATING.

\* MAJOR DIMENSION UNLESS OTHERWISE NOTED. TOLERANCES  
 0.5-6=±0.2  
 6-30=±0.4  
 30-120=±0.6  
 120-315=±1.0  
 ANGLES=±1°

APPROVED	CHECKED	DRAWN	DRAWN DATE
		Betty	06/12/07


**華耀科技有限公司**  
 Hua Yao Technologies co.,Ltd  
 TITLE: TNC FEMALE RP CRIMP  
 DRAWING NO.: TNC-1512-6-L-RP-TGN  
 FILE NO.: D:\DWG\COMPOSE\TNC\TNC-1512-6-L-RP-TGN  
 REV: A  
 GL